

hotel

INFLOOR
carpet-fashion



Coronado 08 150 pattern repeat: 24x24 cm



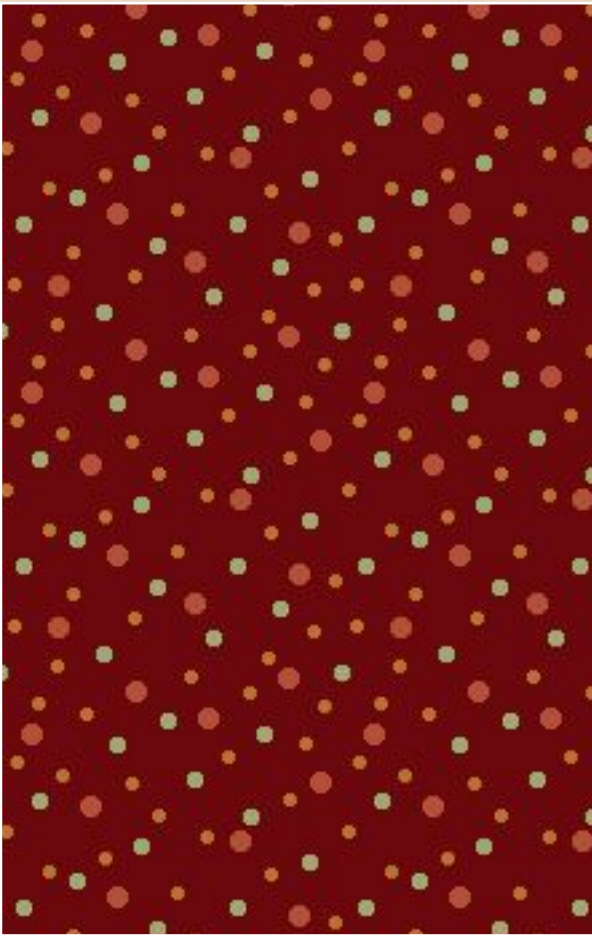
Coronado 07 150 pattern repeat: 24x24 cm



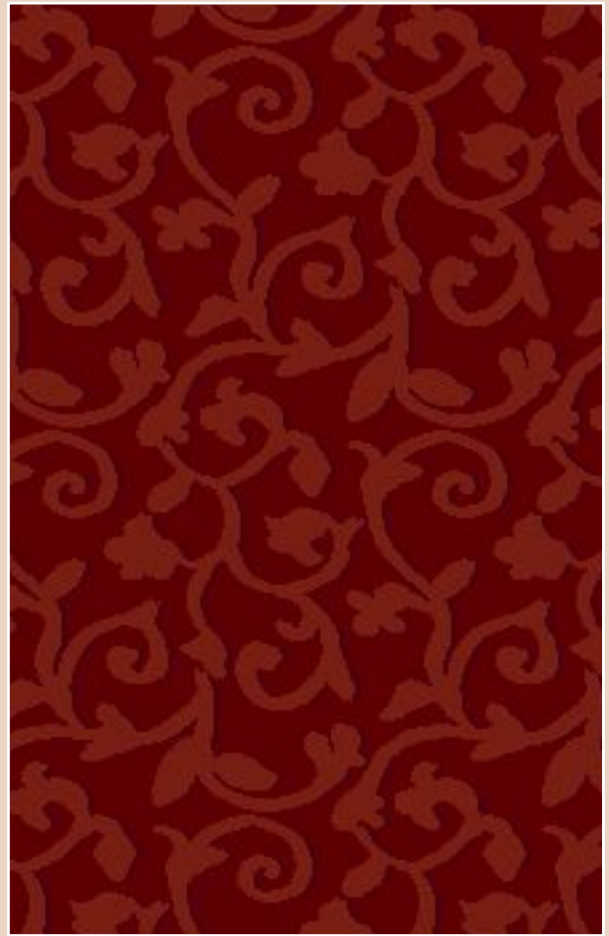
Coronado 06 150 pattern repeat: 11x11 cm



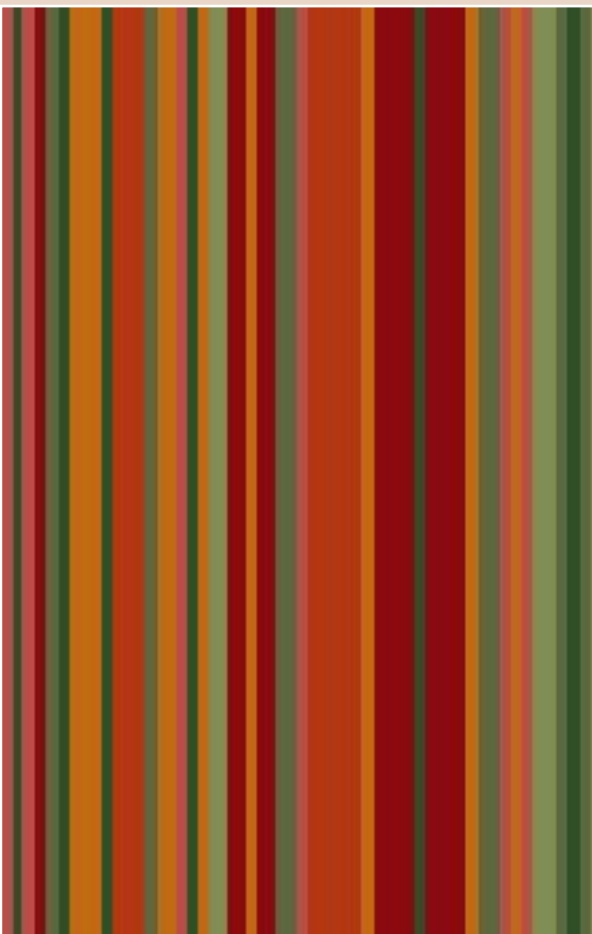
Coronado 05 150 pattern repeat: 6x6 cm



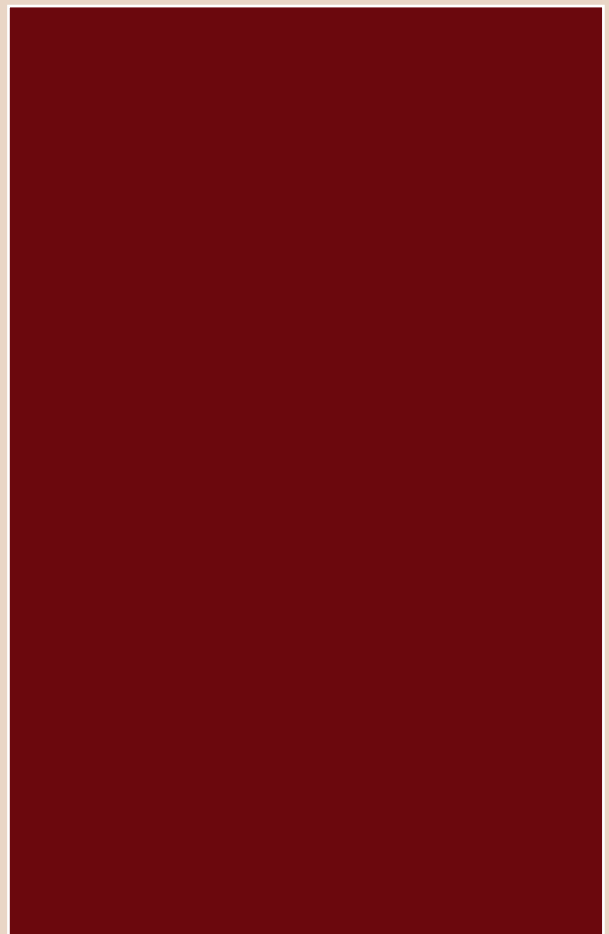
Coronado 03 150 pattern repeat: 22 x 22 cm



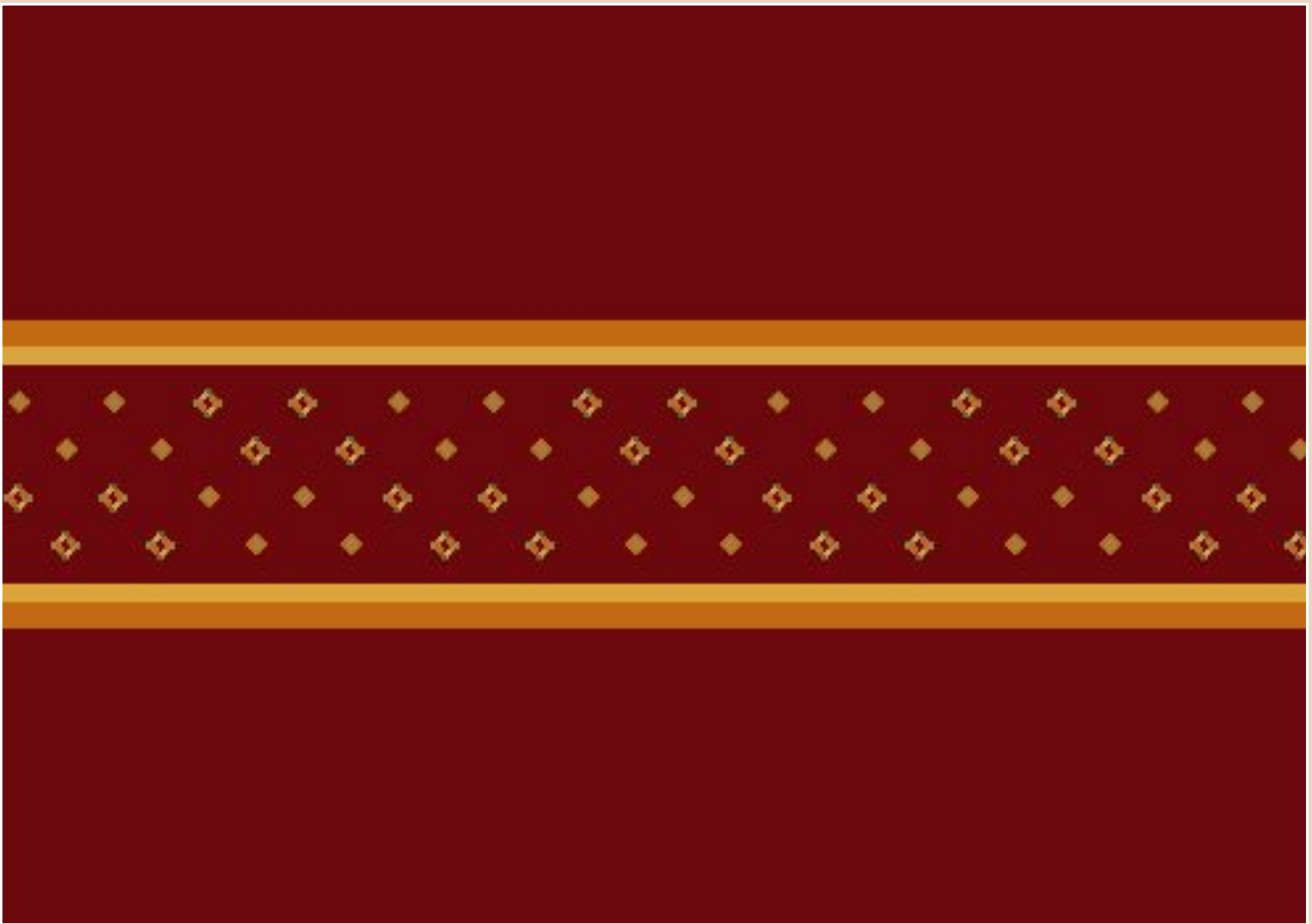
Coronado 04 150 pattern repeat: 25 x 48 cm



Coronado 02 150 repeat width: 40 cm



Coronado 150



Coronado BO 15 150 pattern repeat: 24 x 80 cm
The border will be produced including 60 cm uni material, so that we will achieve a total length of 80 cm
(border will be printed over 'the width' and not in length direction).



Coronado BO 18 150 pattern repeat: 16 x 80 cm
The border will be produced including 60 cm uni material, so that we will achieve a total length of 80 cm
(border will be printed over 'the width' and not in length direction).



Coronado

Polmaterial / Pile material: _____ 100 % PA, Antron
 Noppenzahl / Tufts/m²: _____ ca. 180.000/m²
 Poleinsatzgewicht / Pile weight: _____ ca. 1.100 g/m²
 Gesamtgewicht / Total weight: _____ ca. 1.830 g/m²
 Lieferbreite / Width: _____ ca. 400 cm
 Brennverhalten nach EN 13501-1: _____ cfl s1
 Inflammability acc. to EN 13501-1: _____ cfl s1
 CE Konformitätszertifikat EN 14041: _ 1658-CPD-1076
 GuT-Nr.: / GUT-NO.: _____ 20765

Eignungsbereich / Quality level:

| Strapazierwert / Wear resistance | | | | | Komfortwert / Comfort | | | | | Zusatzeignung / Additional characteristics, suitable for: | | | |
|----------------------------------|--------|----------------|-----------------------|--------------------------|-----------------------|-------------|--------------|--------------------|----------------------|---|--|--|--|
| ★ | ★ | ★ | ★ | ★ | ★ | ★ | ★ | ★ | ★ | | | | |
| gering low | normal | stark heavy | intensiv intensive | extrem extra heavy | einfach low | gut good | hoch high | luxuriös luxury | prestige prestige | | | | |
| | | | | | | | | | | | | | |



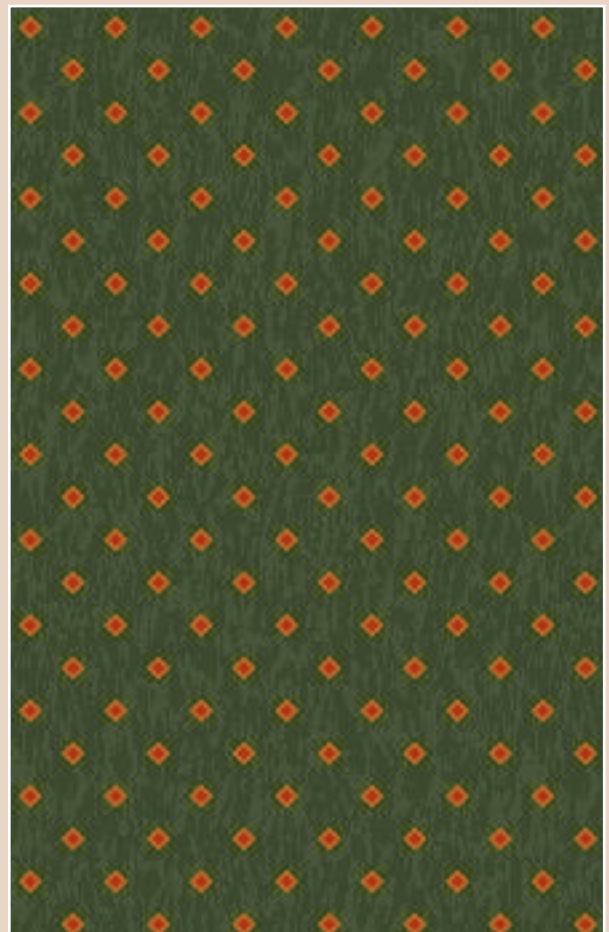
Coronado 08 450 pattern repeat: 24 x 24 cm



Coronado 07 450 pattern repeat: 24 x 24 cm



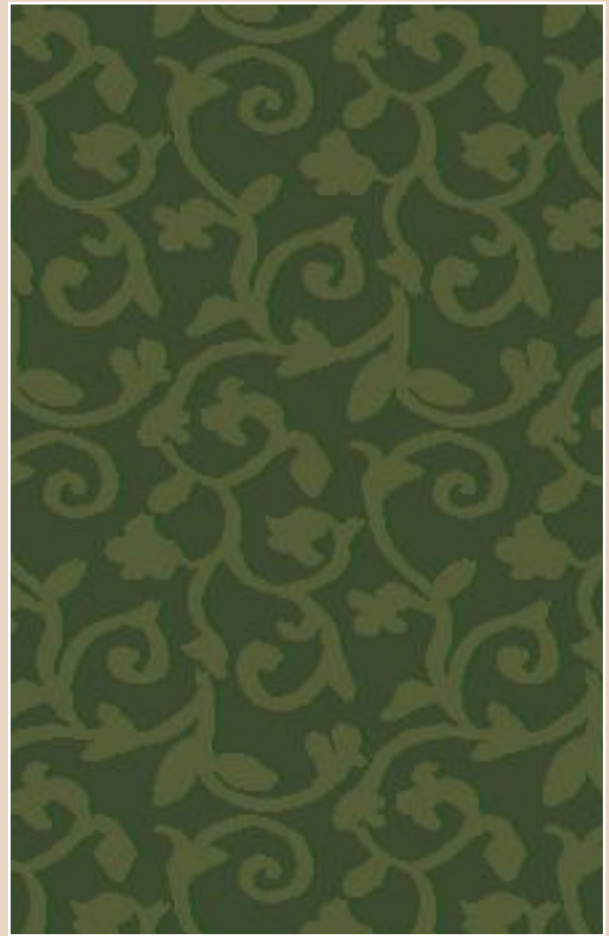
Coronado 06 450 pattern repeat: 11 x 11 cm



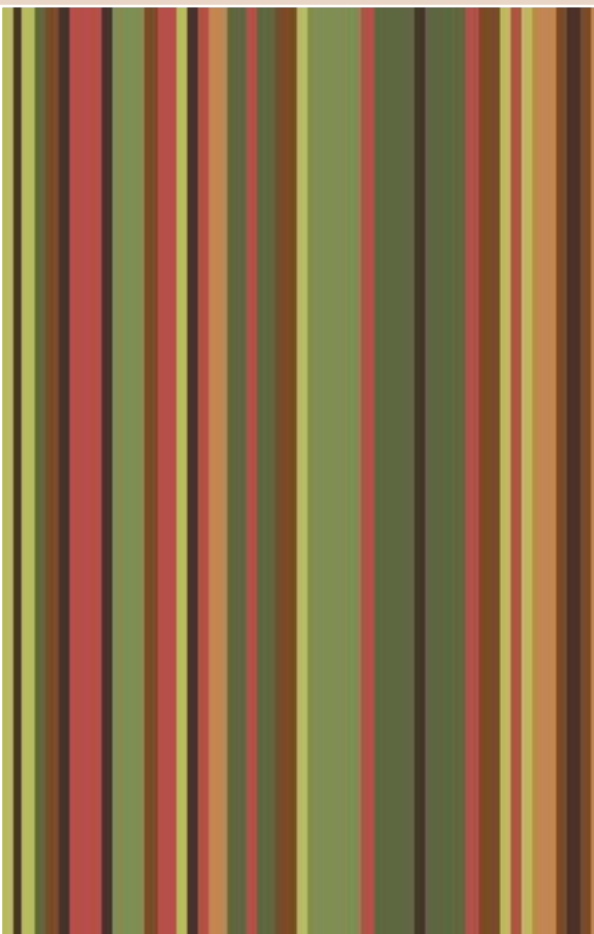
Coronado 05 450 pattern repeat: 6 x 6 cm



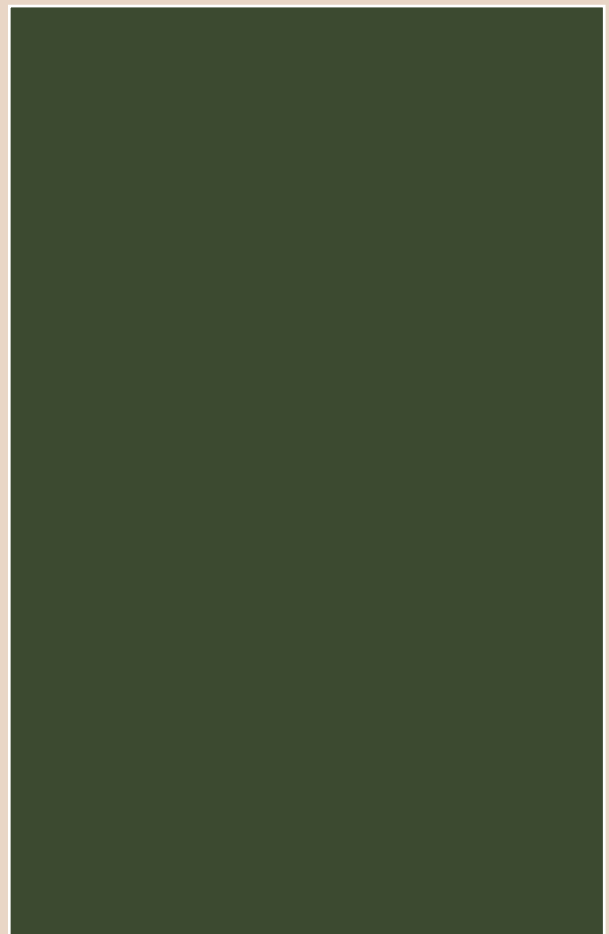
Coronado 03 450 pattern repeat: 22 x 22 cm



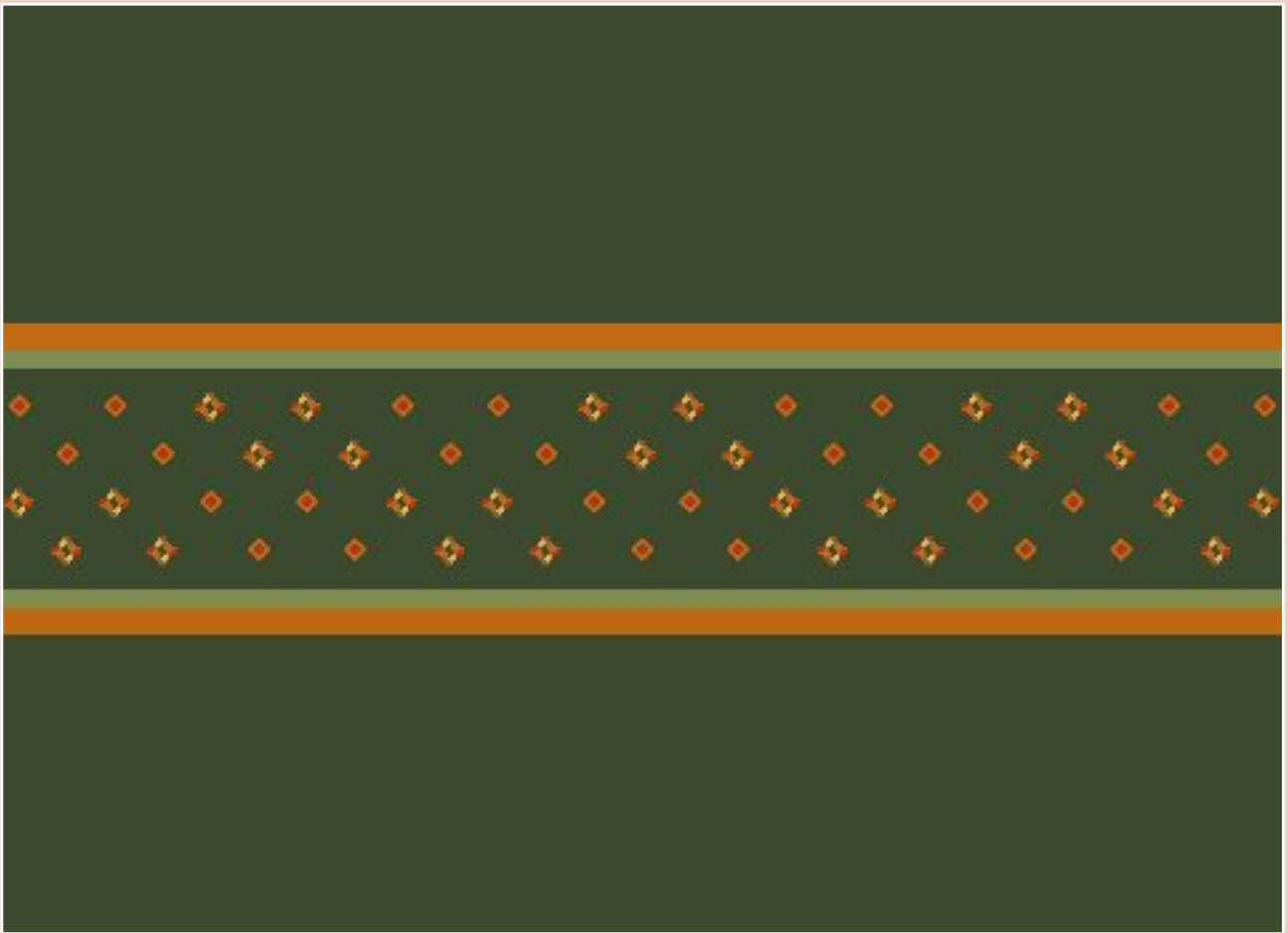
Coronado 04 450 pattern repeat: 25 x 48 cm



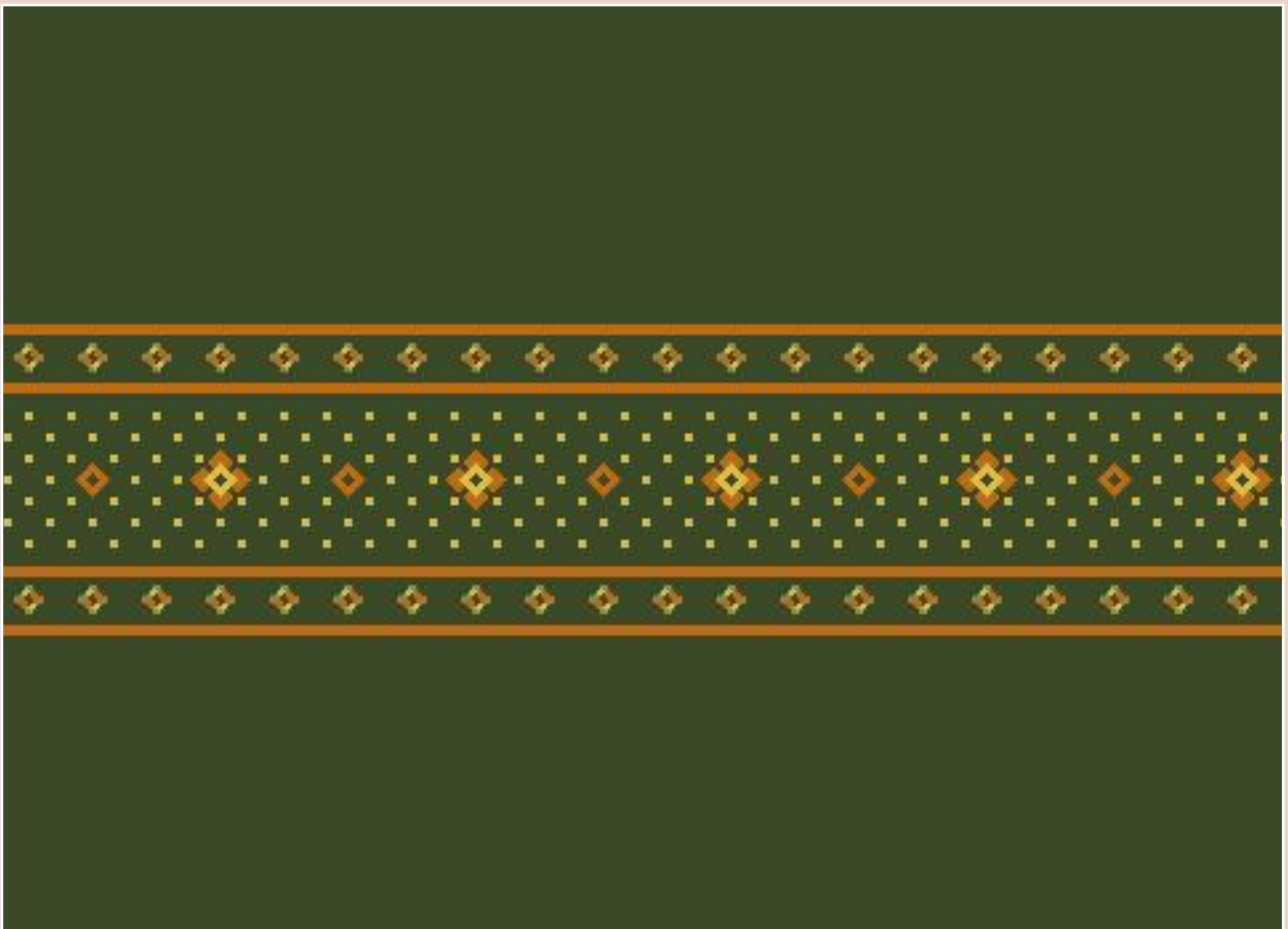
Coronado 02 450 repeat width: 40 cm



Coronado 450



Coronado BO 14 450 pattern repeat: 24x80 cm
The border will be produced including 60 cm uni material, so that we will achieve a total length of 80 cm
(border will be printed over 'the width' and not in length direction).



Coronado BO 21 450 pattern repeat: 16x80 cm
The border will be produced including 60 cm uni material, so that we will achieve a total length of 80 cm
(border will be printed over 'the width' and not in length direction).



Polmaterial / Pile material: _____ 100 % PA, Antron
 Noppenzahl / Tufts/m²: _____ ca. 180.000/m²
 Poleinsatzgewicht / Pile weight: _____ ca. 1.100 g/m²
 Gesamtgewicht / Total weight: _____ ca. 1.830 g/m²
 Lieferbreite / Width: _____ ca. 400 cm
 Brennverhalten nach EN 13501-1: /
 Inflammability acc. to EN 13501-1: _____ cfl s1
 CE Konformitätszertifikat EN 14041: _ 1658-CPD-1076
 GuT-Nr.: / GUT-NO.: _____ 20765

Coronado

Eignungsbereich / Quality level:

| Strapazierwert / Wear resistance | | | | |
|----------------------------------|--------|----------------|-----------------------|--------------------------|
| ★ | ★ | ★ | ★ | ★ |
| gering low | normal | stark heavy | intensiv intensive | extrem extra heavy |

| Komfortwert / Comfort | | | | |
|-----------------------|-------------|--------------|--------------------|----------------------|
| ★ | ★ | ★ | ★ | |
| einfach low | gut good | hoch high | luxuriös luxury | prestige prestige |

| Zusatzeignung / Additional characteristics, suitable for: | | | | |
|---|--|--|--|--|
| | | | | |



Coronado 08 350 pattern repeat: 24 x 24 cm



Coronado 07 350 pattern repeat: 24 x 24 cm



Coronado 06 350 pattern repeat: 11 x 11 cm



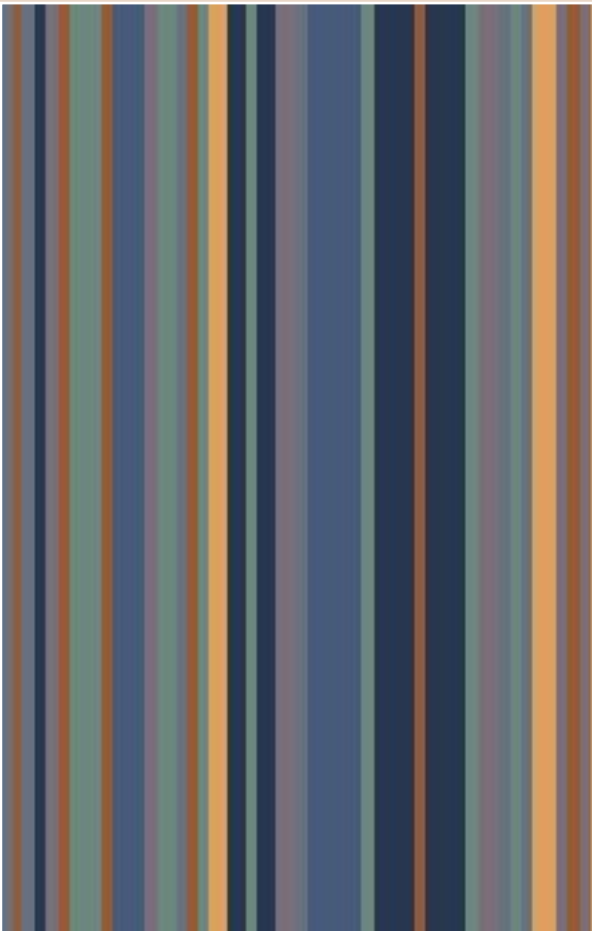
Coronado 05 350 pattern repeat: 6 x 6 cm



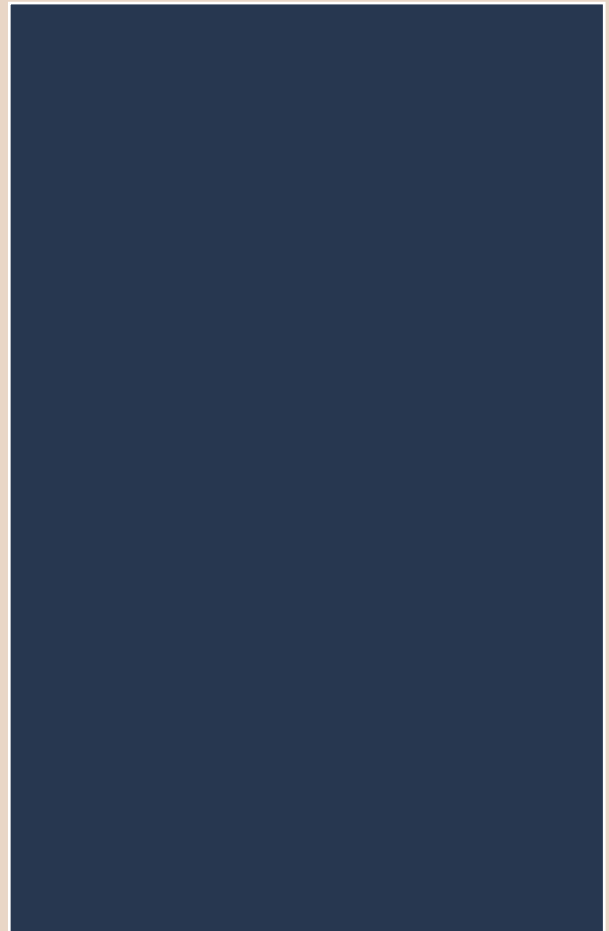
Coronado 03 350 pattern repeat: 22 x 22 cm



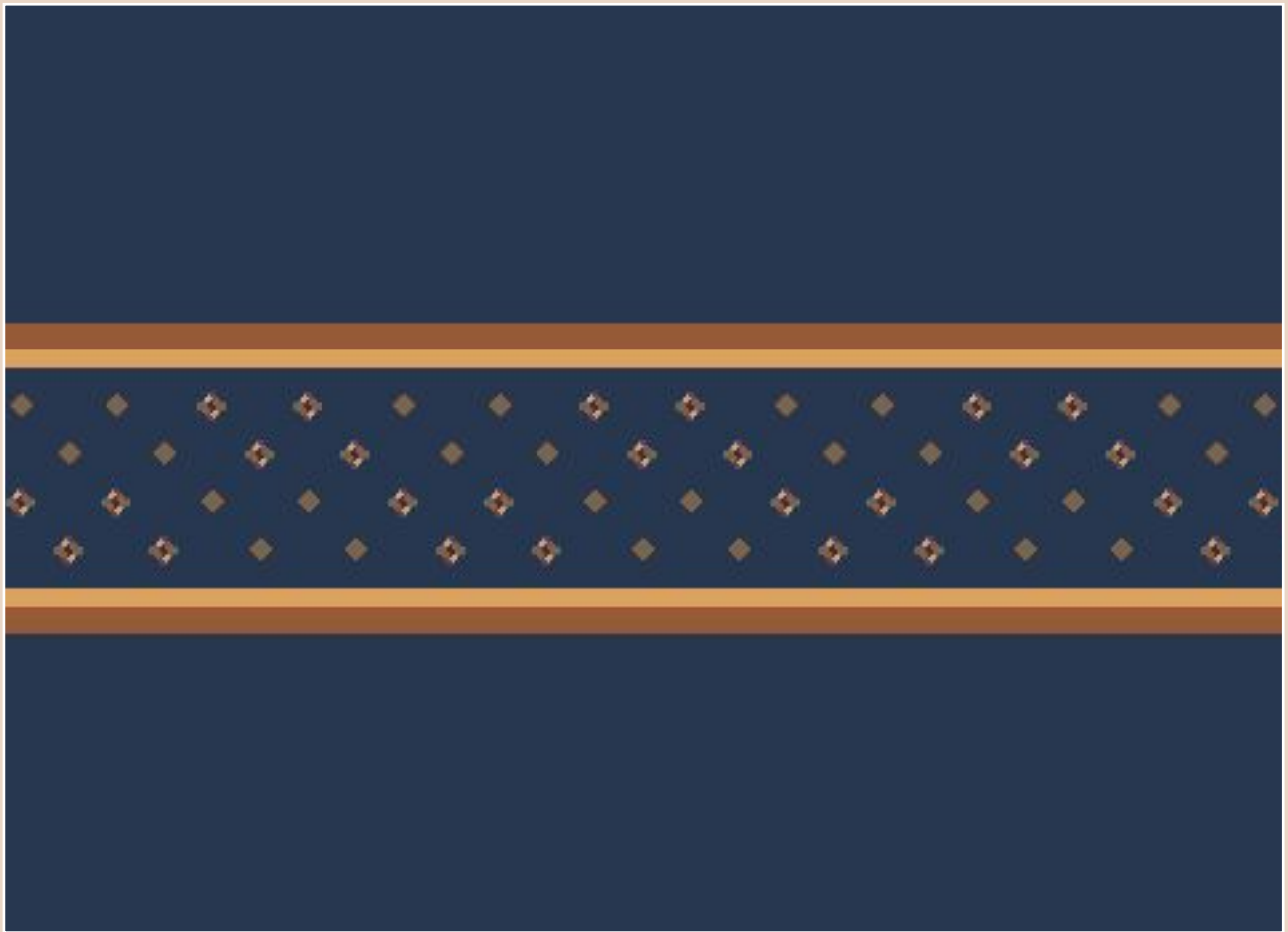
Coronado 04 350 pattern repeat: 25 x 48 cm



Coronado 02 350 repeat width: 40 cm



Coronado 350



Coronado BO 13 350 pattern repeat: 24 x 80 cm
The border will be produced including 60 cm uni material, so that we will achieve a total length of 80 cm
(border will be printed over 'the width' and not in length direction).



Coronado BO 16 350 pattern repeat: 16 x 80 cm
The border will be produced including 60 cm uni material, so that we will achieve a total length of 80 cm
(border will be printed over 'the width' and not in length direction).



Coronado

Polmaterial / Pile material: _____ 100 % PA, Antron
 Noppenzahl / Tufts/m²: _____ ca. 180.000/m²
 Poleinsatzgewicht / Pile weight: _____ ca. 1.100 g/m²
 Gesamtgewicht / Total weight: _____ ca. 1.830 g/m²
 Lieferbreite / Width: _____ ca. 400 cm
 Brennverhalten nach EN 13501-1: /
 Inflammability acc. to EN 13501-1: _____ cfl s1
 CE Konformitätszertifikat EN 14041: _ 1658-CPD-1076
 GuT-Nr.: / GUT-NO.: _____ 20765

Eignungsbereich / Quality level:

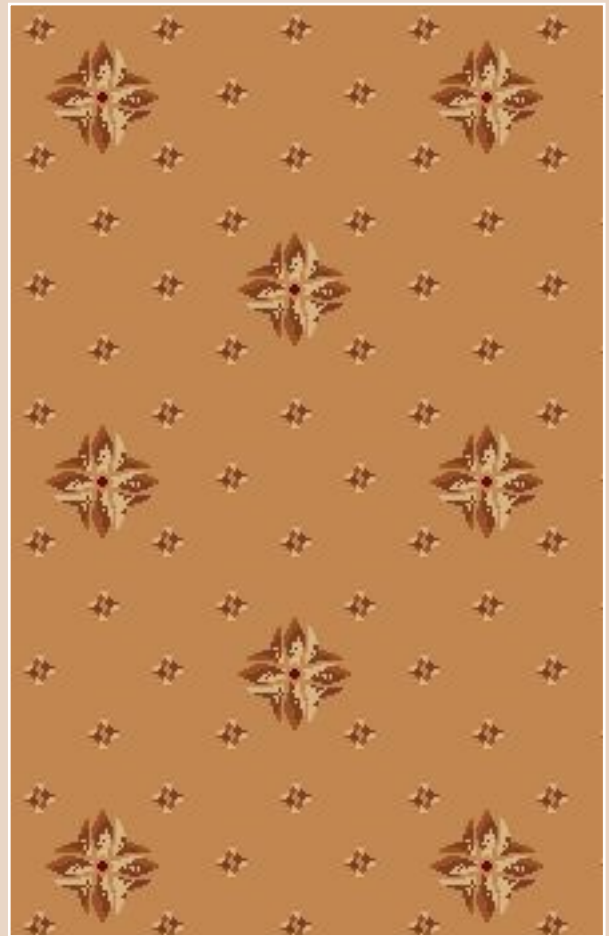
| Strapazierwert / Wear resistance | | | | |
|----------------------------------|--------|----------------|-----------------------|--------------------------|
| ★ | ★ | ★ | ★ | ★ |
| gering low | normal | stark heavy | intensiv intensive | extrem extra heavy |

| Komfortwert / Comfort | | | | |
|-----------------------|-------------|--------------|--------------------|----------------------|
| ★ | ★ | ★ | ★ | |
| einfach low | gut good | hoch high | luxuriös luxury | prestige prestige |

| Zusatzeignung: / Additional characteristics, suitable for: | | | | |
|--|--|--|--|--|
| | | | | |



Coronado 08 250 pattern repeat: 24 x 24 cm



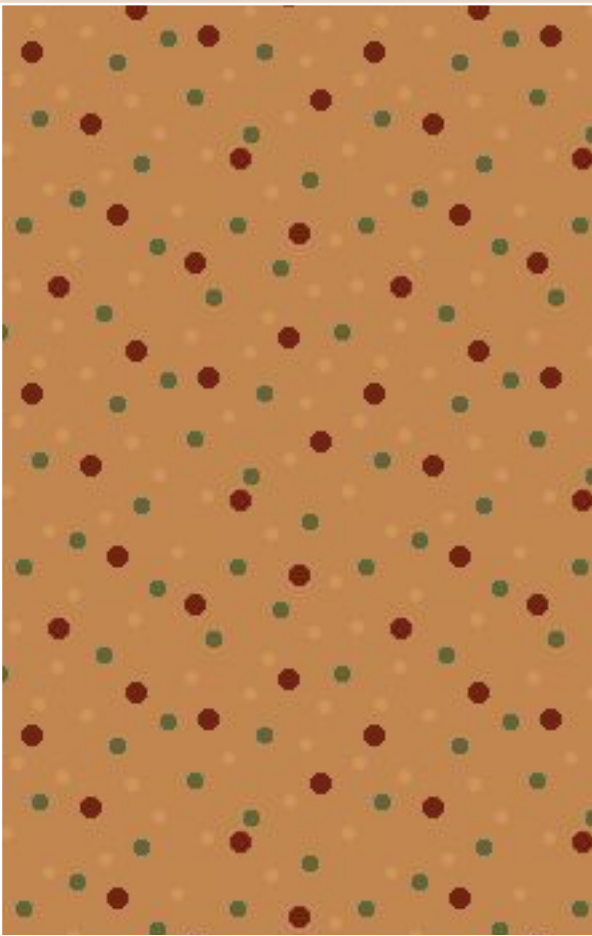
Coronado 07 250 pattern repeat: 24 x 24 cm



Coronado 06 250 pattern repeat: 11 x 11 cm



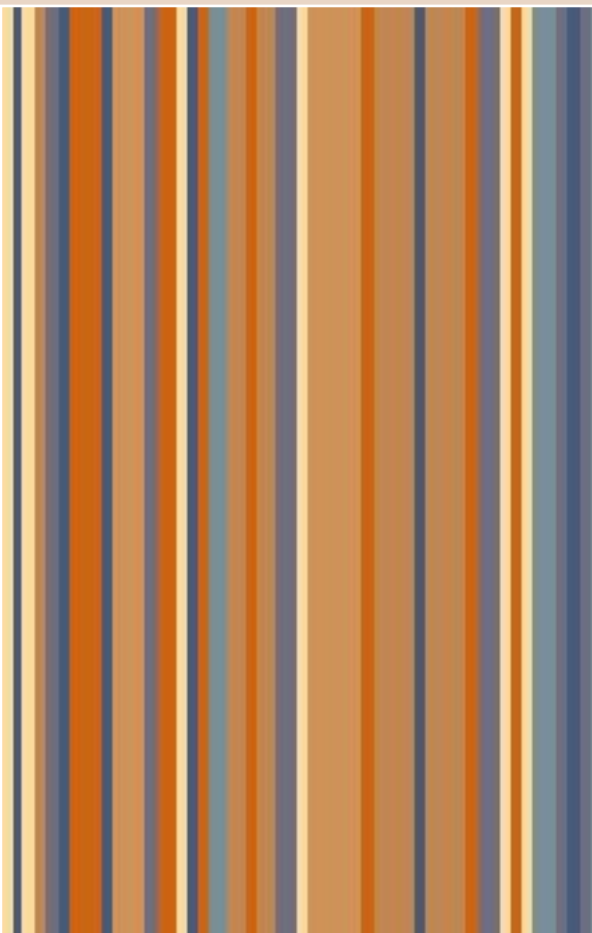
Coronado 05 250 pattern repeat: 6 x 6 cm



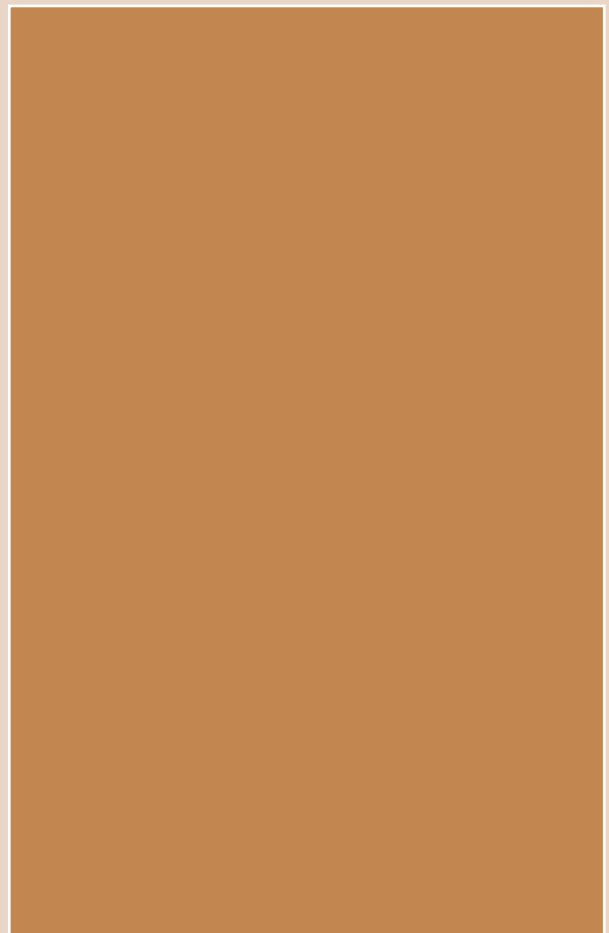
Coronado 03 250 pattern repeat: 22x22 cm



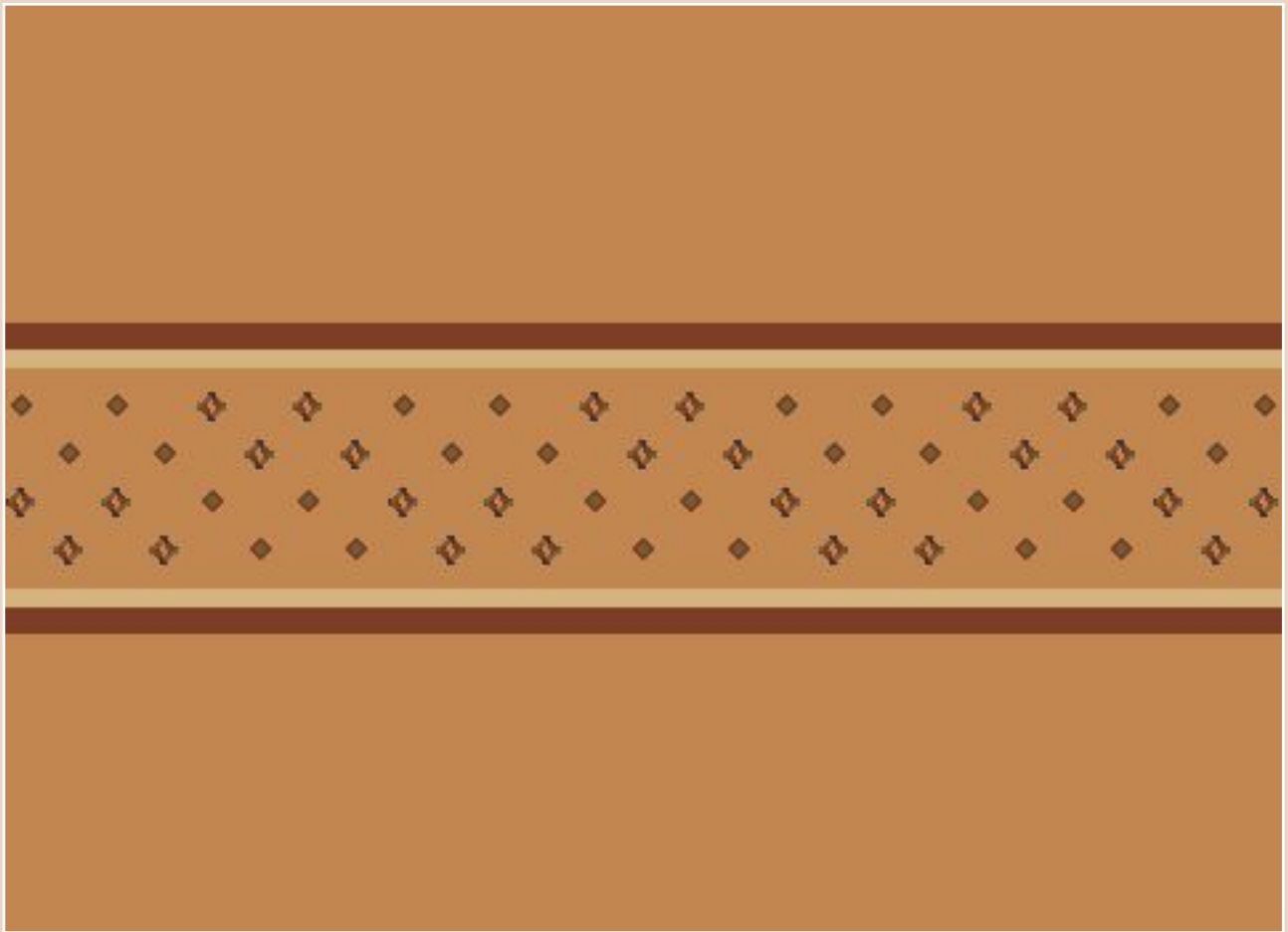
Coronado 04 250 pattern repeat: 25 x 48 cm



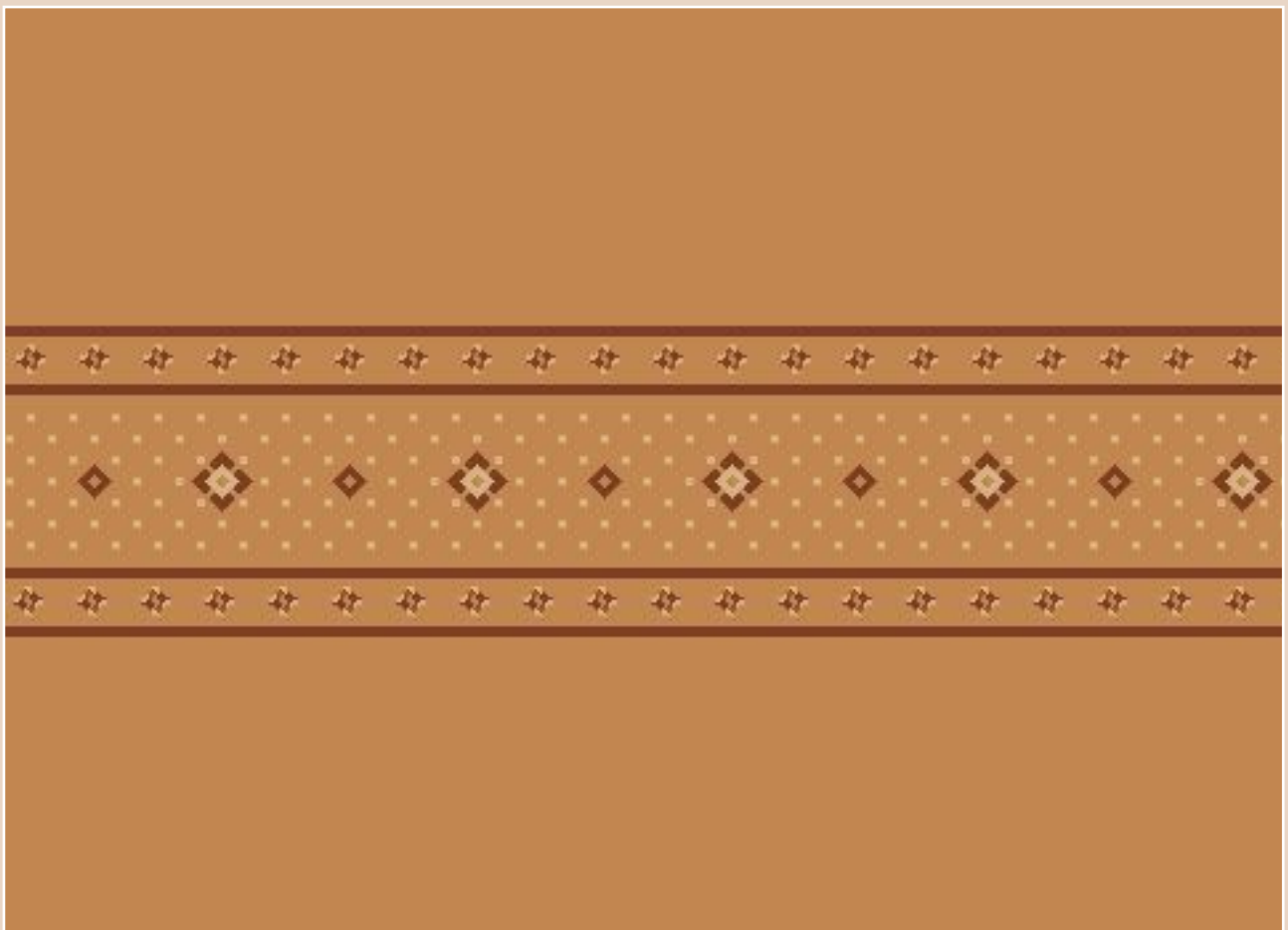
Coronado 02 250 repeat width: 40 cm



Coronado 250



Coronado BO 10 250 pattern repeat: 24x80 cm
The border will be produced including 60 cm uni material, so that we will achieve a total length of 80 cm (border will be printed over 'the width' and not in length direction).



Coronado BO 20 250 pattern repeat: 16x80 cm
The border will be produced including 60 cm uni material, so that we will achieve a total length of 80 cm (border will be printed over 'the width' and not in length direction).

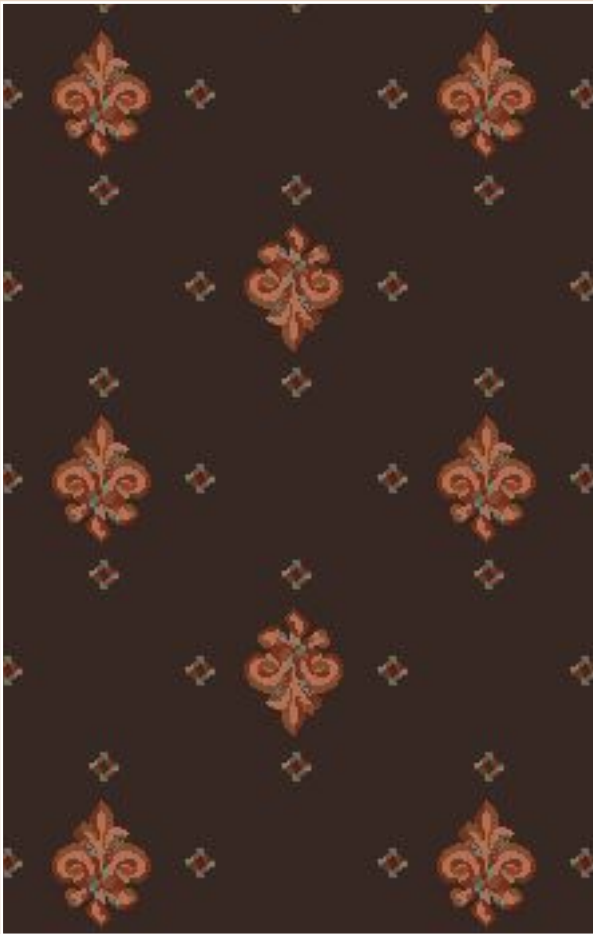


Coronado

Polmaterial / Pile material: _____ 100% PA, Antron
 Noppenzahl / Tufts/m²: _____ ca. 180.000/m²
 Poleinsatzgewicht / Pile weight: _____ ca. 1.100 g/m²
 Gesamtgewicht / Total weight: _____ ca. 1.830 g/m²
 Lieferbreite / Width: _____ ca. 400 cm
 Brennverhalten nach EN 13501-1: /
 Inflammability acc. to EN 13501-1: _____ cfl s1
 CE Konformitätszertifikat EN 14041: _ 1658-CPD-1076
 GuT-Nr.: / GUT-NO.: _____ 20765

Eignungsbereich / Quality level:

| Strapazierwert / Wear resistance | | | | | Komfortwert / Comfort | | | | | Zusatzeignung / Additional characteristics, suitable for: | | | |
|----------------------------------|------------------|----------------|-----------------------|--------------------------|-----------------------|-------------|--------------|--------------------|----------------------|---|--|--|--|
| ★ | ★ | ★ | ★ | ★ | ★ | ★ | ★ | ★ | ★ | | | | |
| gering low | normal normal | stark heavy | intensiv intensive | extrem extra heavy | einfach low | gut good | hoch high | luxuriös luxury | prestige prestige | | | | |
| | | | | | | | | | | | | | |



Coronado 08 750 pattern repeat: 24x24 cm



Coronado 07 750 pattern repeat: 24x24 cm



Coronado 06 750 pattern repeat: 11x11 cm



Coronado 05 750 pattern repeat: 6x6 cm



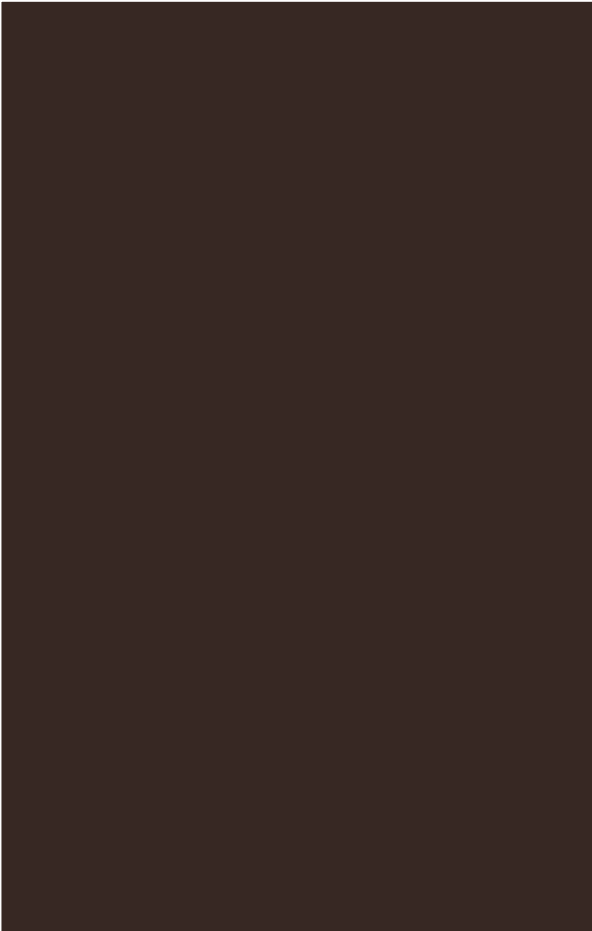
Coronado 03 750 pattern repeat: 22 x 22 cm



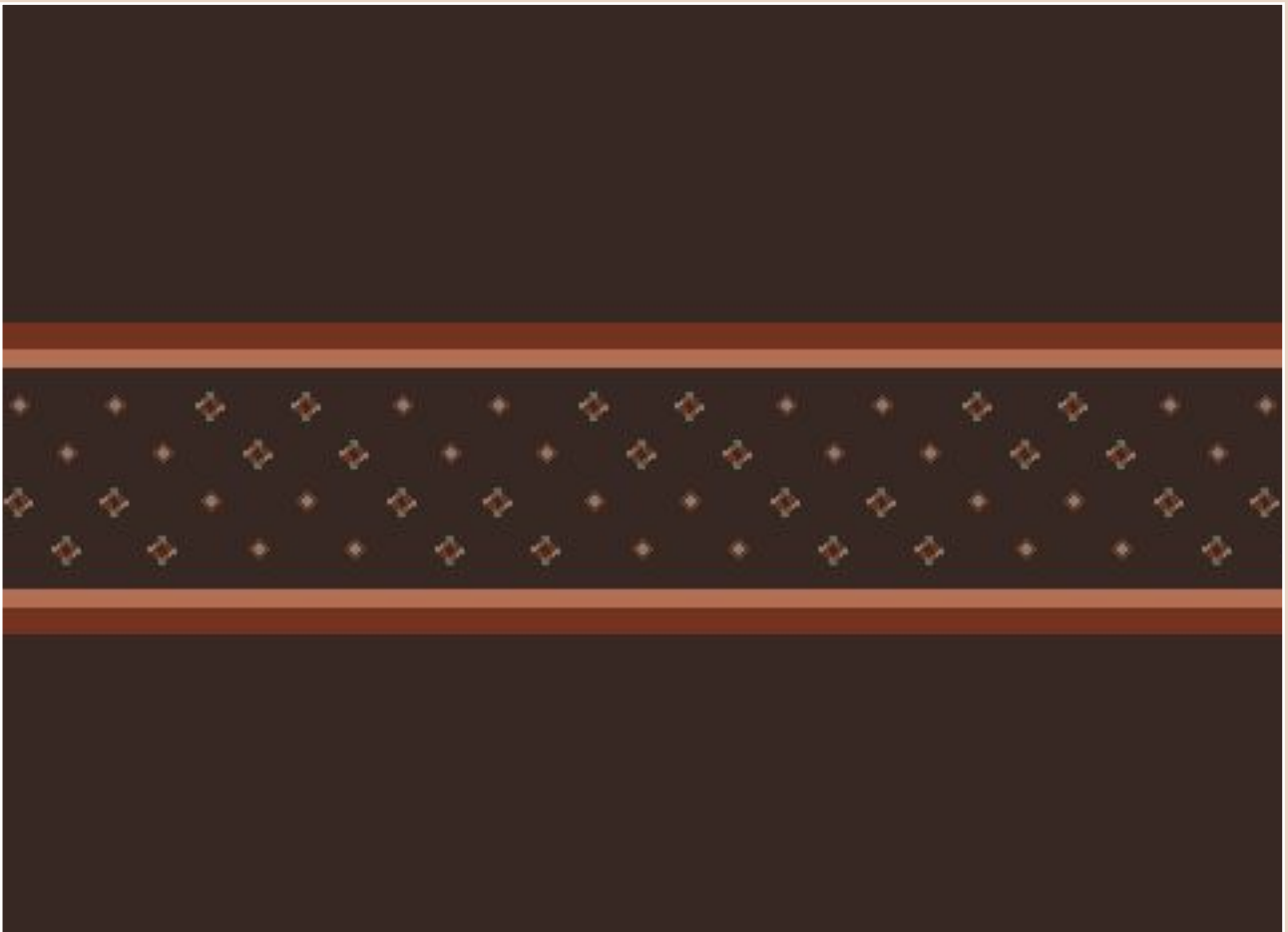
Coronado 04 750 pattern repeat: 25 x 48 cm



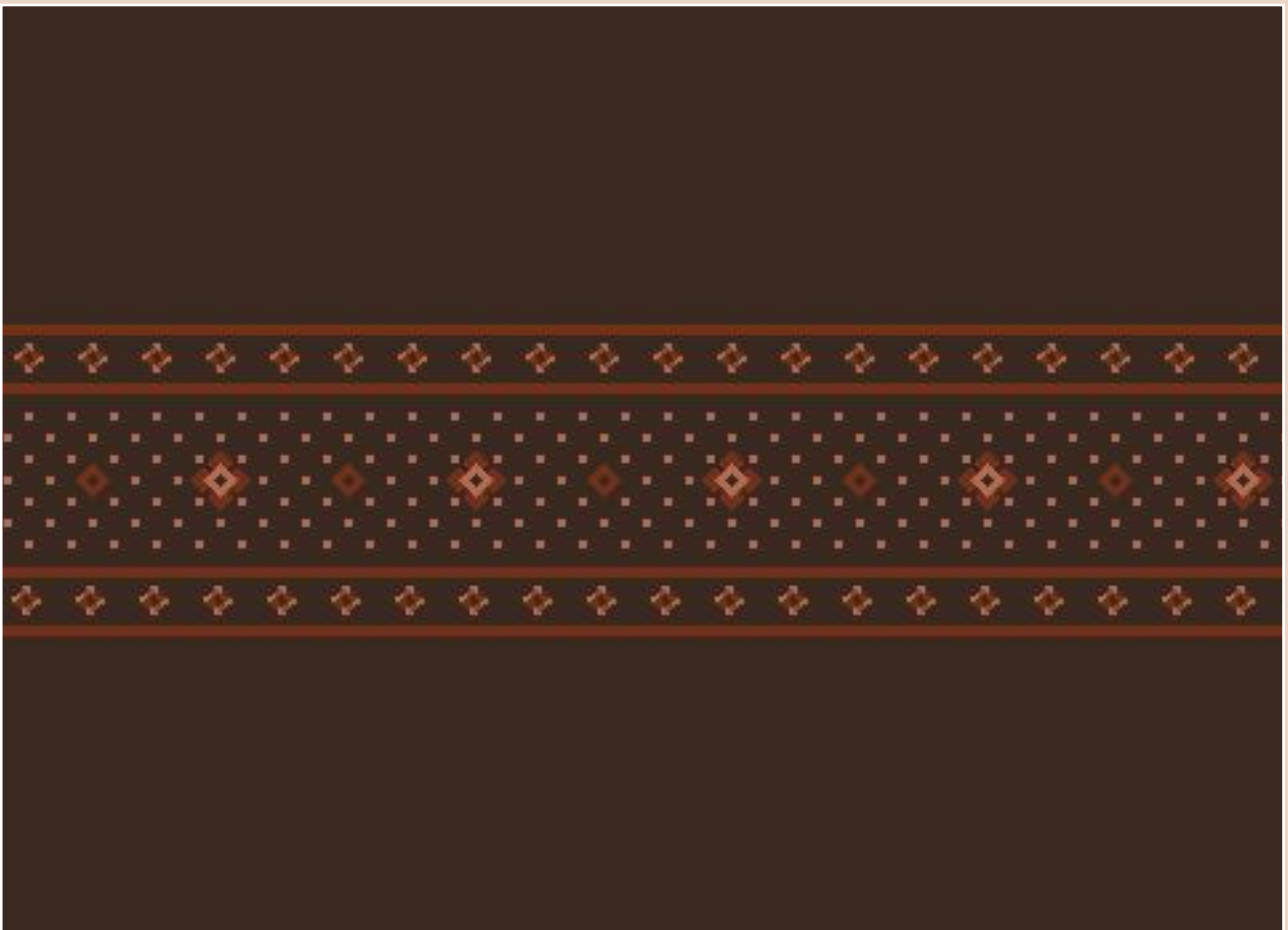
Coronado 02 750 repeat width: 40 cm



Coronado 750



Coronado BO 12 750 pattern repeat: 24 x 80 cm
The border will be produced including 60 cm uni material, so that we will achieve a total length of 80 cm
(border will be printed over 'the width' and not in length direction).



Coronado BO 17 750 pattern repeat: 16 x 80 cm
The border will be produced including 60 cm uni material, so that we will achieve a total length of 80 cm
(border will be printed over 'the width' and not in length direction).



Coronado

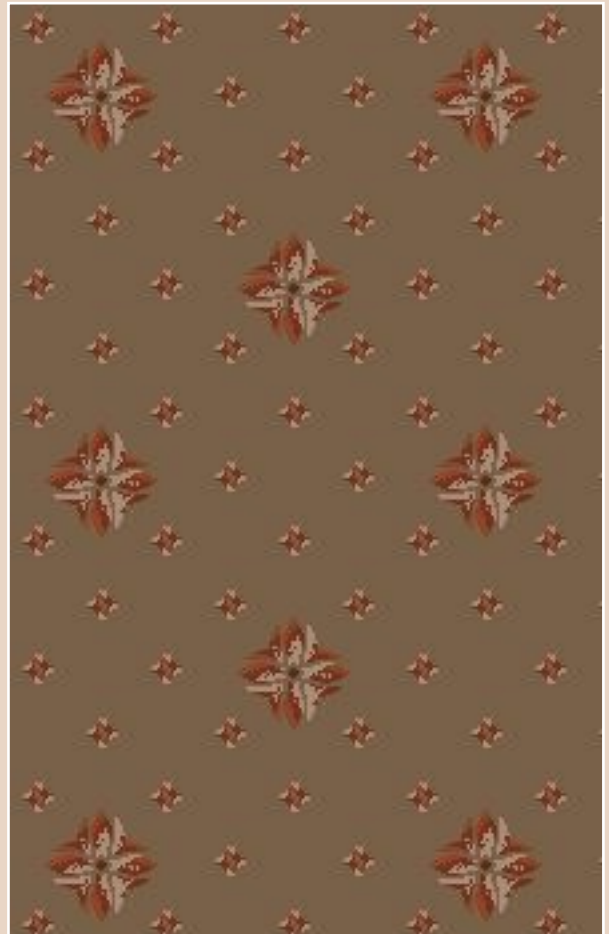
Polmaterial / Pile material: _____ 100 % PA, Antron
 Noppenzahl / Tufts/m²: _____ ca. 180.000/m²
 Poleinsatzgewicht / Pile weight: _____ ca. 1.100 g/m²
 Gesamtgewicht / Total weight: _____ ca. 1.830 g/m²
 Lieferbreite / Width: _____ ca. 400 cm
 Brennverhalten nach EN 13501-1: /
 Inflammability acc. to EN 13501-1: _____ cfl s1
 CE Konformitätszertifikat EN 14041: _ 1658-CPD-1076
 GuT-Nr.: / GUT-NO.: _____ 20765

Eignungsbereich / Quality level:

| Strapazierwert / Wear resistance | | | | | Komfortwert / Comfort | | | | | Zusatzeignung / Additional characteristics, suitable for: | | | |
|----------------------------------|------------------|----------------|-----------------------|--------------------------|-----------------------|-------------|--------------|--------------------|----------------------|---|--|--|--|
| ★ | ★ | ★ | ★ | ★ | ★ | ★ | ★ | ★ | ★ | | | | |
| gering low | normal normal | stark heavy | intensiv intensive | extrem extra heavy | einfach low | gut good | hoch high | luxuriös luxury | prestige prestige | | | | |
| | | | | | | | | | | | | | |



Coronado 08 850 pattern repeat: 24 x 24 cm



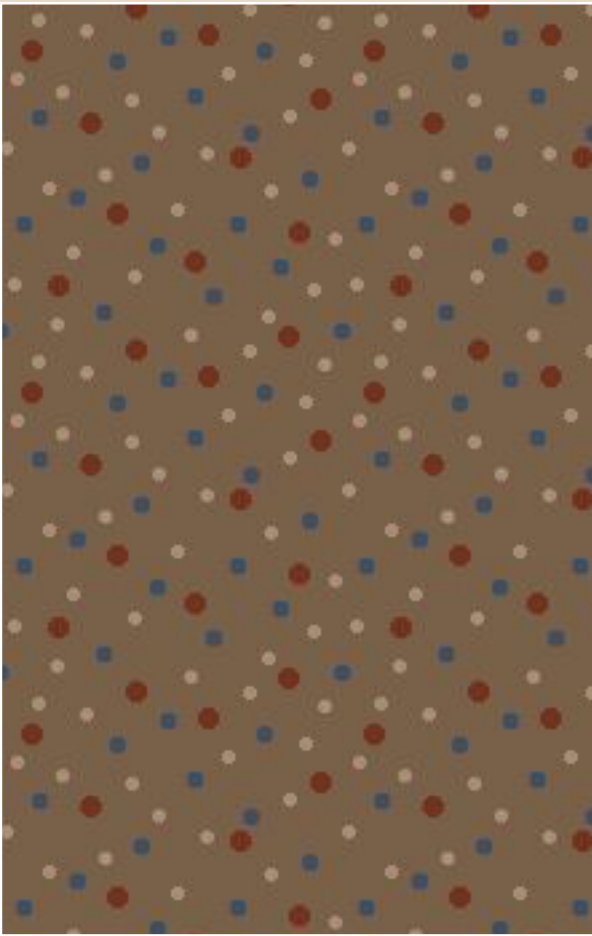
Coronado 07 850 pattern repeat: 24 x 24 cm



Coronado 06 850 pattern repeat: 11 x 11 cm



Coronado 05 850 pattern repeat: 6 x 6 cm



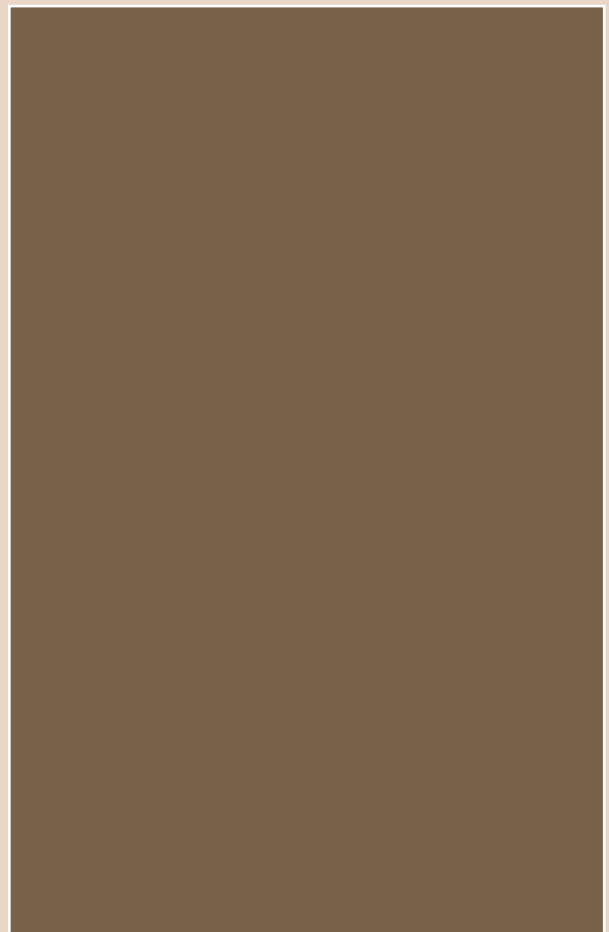
Coronado 03 850 pattern repeat: 22 x 22 cm



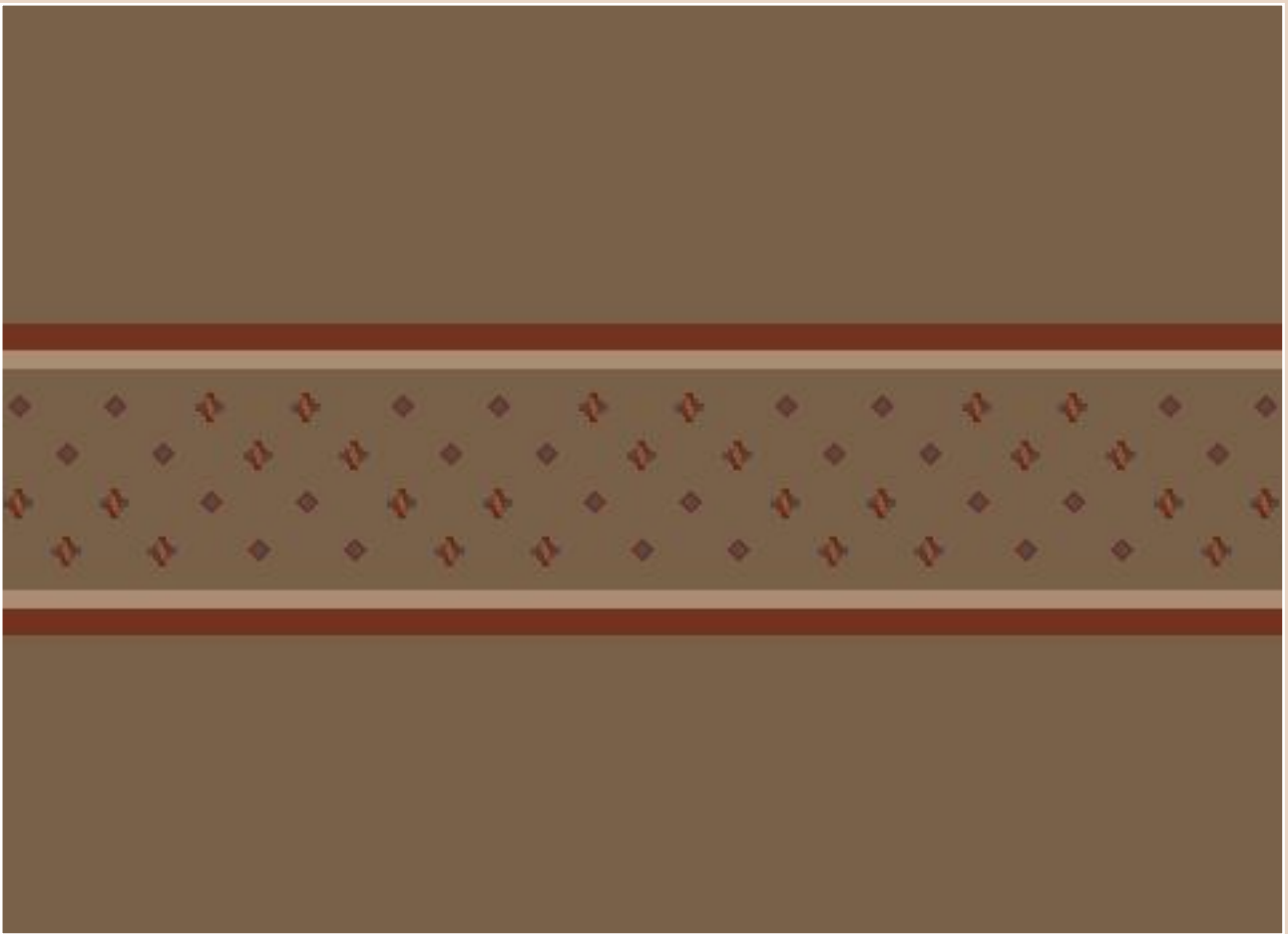
Coronado 04 850 pattern repeat: 25 x 48 cm



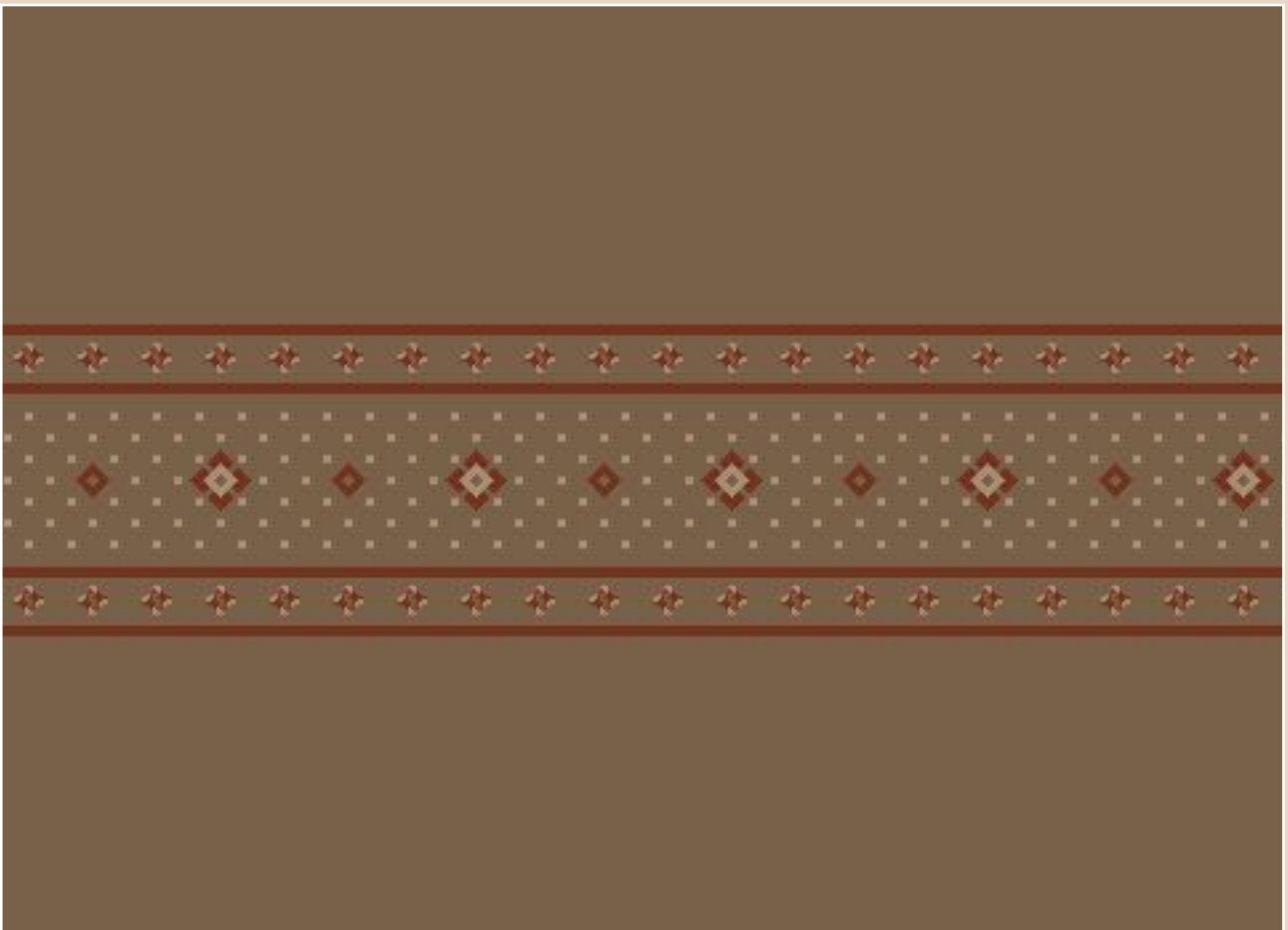
Coronado 02 850 repeat width: 40 cm



Coronado 850



Coronado BO 11 850 pattern repeat: 24 x 80 cm
The border will be produced including 60 cm uni material, so that we will achieve a total length of 80 cm
(border will be printed over 'the width' and not in length direction).



Coronado BO 19 850 pattern repeat: 16 x 80 cm
The border will be produced including 60 cm uni material, so that we will achieve a total length of 80 cm
(border will be printed over 'the width' and not in length direction).



Polmaterial / Pile material: _____ 100% PA, Antron
 Noppenzahl / Tufts/m²: _____ ca. 180.000/m²
 Poleinsatzgewicht / Pile weight: _____ ca. 1.100 g/m²
 Gesamtgewicht / Total weight: _____ ca. 1.830 g/m²
 Lieferbreite / Width: _____ ca. 400 cm
 Brennverhalten nach EN 13501-1: _____
 Inflammability acc. to EN 13501-1: _____ cfl s1
 CE Konformitätszertifikat EN 14041: _ 1658-CPD-1076
 GuT-Nr.: / GUT-NO.: _____ 20765

Coronado

Eignungsbereich / Quality level:

| Strapazierwert / Wear resistance | | | | | Komfortwert / Comfort | | | | | Zusatzeignung / Additional characteristics, suitable for: | | | |
|----------------------------------|------------------|----------------|-----------------------|--------------------------|-----------------------|-------------|--------------|--------------------|----------------------|---|---|---|---|
| ★ | ★ | ★ | ★ | ★ | ★ | ★ | ★ | ★ | ★ | | | | |
| gering low | normal normal | stark heavy | intensiv intensive | extrem extra heavy | einfach low | gut good | hoch high | luxuriös luxury | prestige prestige | | | | |
| | | | | | | | | | |  |  |  |  |



Cottel

Polmaterial / Pile material: _____ 100% PA, Antron
 Noppenzahl / Tufts/m²: _____ ca. 45.000/m²
 Poleinsatzgewicht / Pile weight: _____ ca. 1.250 g/m²
 Gesamtgewicht / Total weight: _____ ca. 2.250 g/m²
 Lieferbreite / Width: _____ ca. 200/300/400/500 cm
 Brennverhalten nach EN 13501-1: _____
 Inflammability acc. to EN 13501-1: _____ cfl s1
 CE Konformitätszertifikat EN 14041: _____ 1658-CPD-1076
 GuT-Nr.: / GUT-NO.: _____ 22519

Eignungsbereich / Quality level:

| Strapazierwert / Wear resistance | | | | | Komfortwert / Comfort | | | | | Zusatzeignung: / Additional characteristics, suitable for: | | | |
|----------------------------------|--------|----------------|-----------------------|--------------------------|-----------------------|-------------|--------------|--------------------|----------|--|--|--|--|
| ★ | ★ | ★ | ★ | ★ | ★ | ★ | ★ | ★ | ★ | | | | |
| gering low | normal | stark heavy | intensiv intensive | extrem extra heavy | einfach low | gut good | hoch high | luxuriös luxury | prestige | | | | |





800



820



520



305



810



210



550



335



840



260



590



365



730



860



460



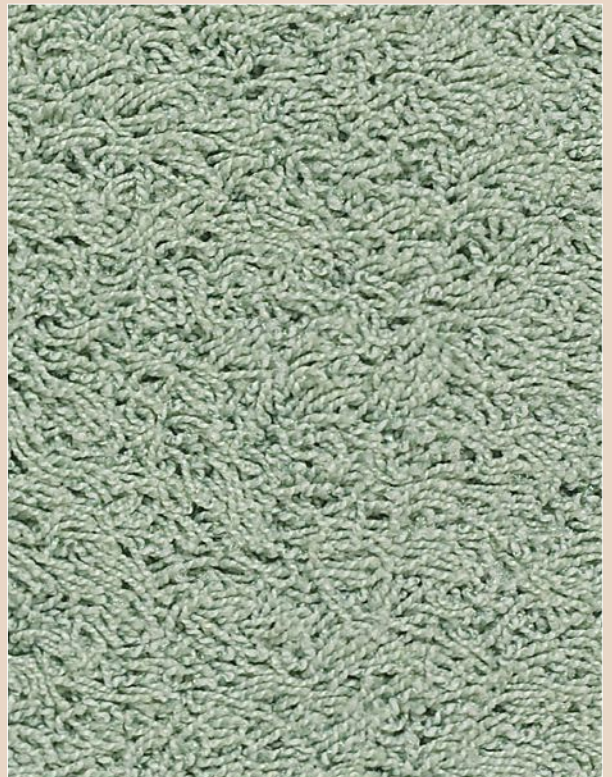
440



780



705



725



120



715



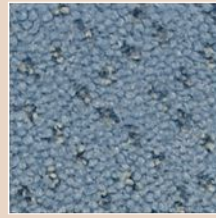
140



840



520



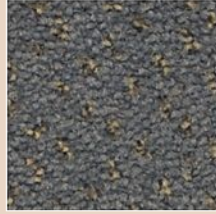
320



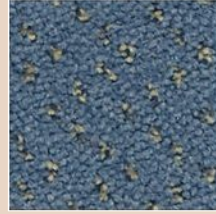
440



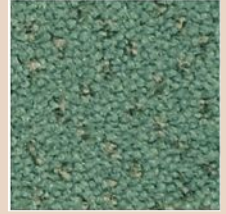
720



560



360



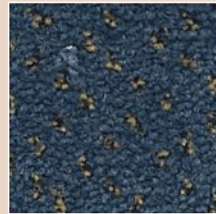
450



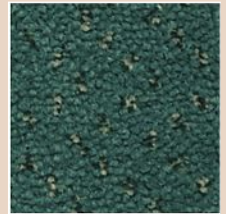
740



590



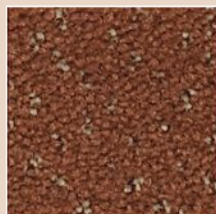
370



470



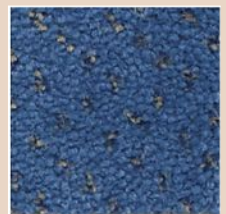
760



700



140



350



730



250



Como sample feeler 700



850



220

Polmaterial / Pile material: _____ 100 % PA, Antron
 Noppenzahl / Tufts/m²: _____ ca. 200.000/m²
 Poleinsatzgewicht / Pile weight: _____ ca. 1.120 g/m²
 Gesamtgewicht / Total weight: _____ ca. 1.950 g/m²
 Lieferbreite / Width: _____ ca. 400/500 cm
 Brennverhalten nach EN 13501-1: /
 Inflammability acc. to EN 13501-1: _____ cfl s1
 CE Konformitätszertifikat EN 14041: _____ 1658-CPD-1076
 GuT-Nr.: / GUT-NO.: _____ 20767

Eignungsbereich / Quality

| Strapazierwert / Wear resistance | | | | | Komfortwert / Comfort | | | | Zusatzeignung / Additional characteristics, suitable for: | | | |
|----------------------------------|--------|----------------|----------|--------------------------|-----------------------|-------------|--------------|--------------------|---|--|--|--|
| ★ | ★ | ★ | ★ | ★ | ★ | ★ | ★ | ★ | | | | |
| gering low | normal | stark heavy | intensiv | extrem extra heavy | einfach low | gut good | hoch high | luxuriös luxury | prestige | | | |



impulse

Mit unserem Programm IMPULSE realisieren wir ab 100 m² auf unserer Computer-gesteuerten Druckanlage nahezu jeden Musterwunsch.

Die Artikel Corso (100% Polyamid Aqualon), Congress (100% Polyamid Antron), jeweils in verschiedenen Gewichtsvarianten, sowie Capitol (80% Wolle und 20% Polyamid) bilden die Basisqualitäten. Bis zu 8 Farben pro Dessin sind möglich - z. B. nach RAL und Pantone - oder aus unseren 168 Vorschlägen.

Wir freuen uns auf ihre Anfragen und Aufträge die wir sorgfältig und kurzfristig bearbeiten werden. Unser Verkaufs- und Design-Team sind stets bereit, Ihnen zu helfen. Deshalb zögern Sie nicht uns zu fordern.

From 100 m² upwards we can create by the use of our computer-controlled printing machine any individual designs.

The basic products are Corso (100% Polyamid Aqualon) and Congress (100% Polyamid Antron), each quality with different pileweights and Capitol (80% Wool, 20% Polyamid) with one standard pileweight. Create each design up to 8 colors based on RAL or Pantone or from our 168 color-proposals.

We are always pleased to receive your requirements and orders, which will be given our close attention and earliest possible response. Our sales- and design-team is always ready to assist you. So do not hesitate to challenge us.





INFLOOR

carpet-fashion

INFLOOR GmbH & Co. KG Teppichbodenwerk
Daimlerstraße 8-12 · 33442 Herzebrock-Clarholz
Tel.: +49(0)5245/8401-0 · Fax.: +49(0)5245/8401-90
E-mail: info@infloor.de · Internet: www.infloor.de